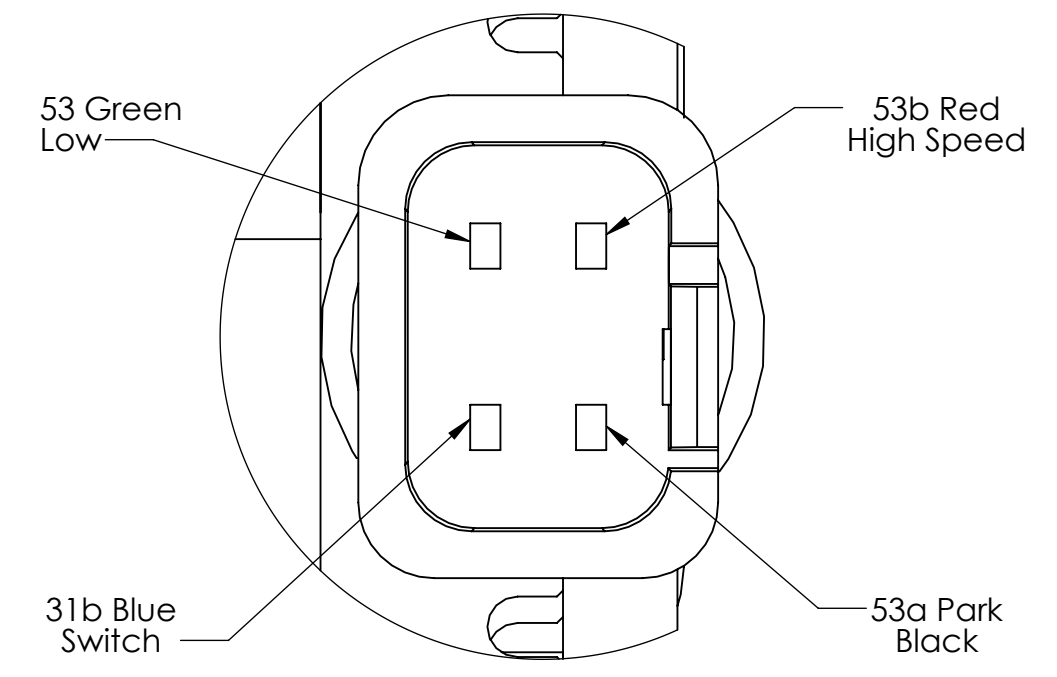
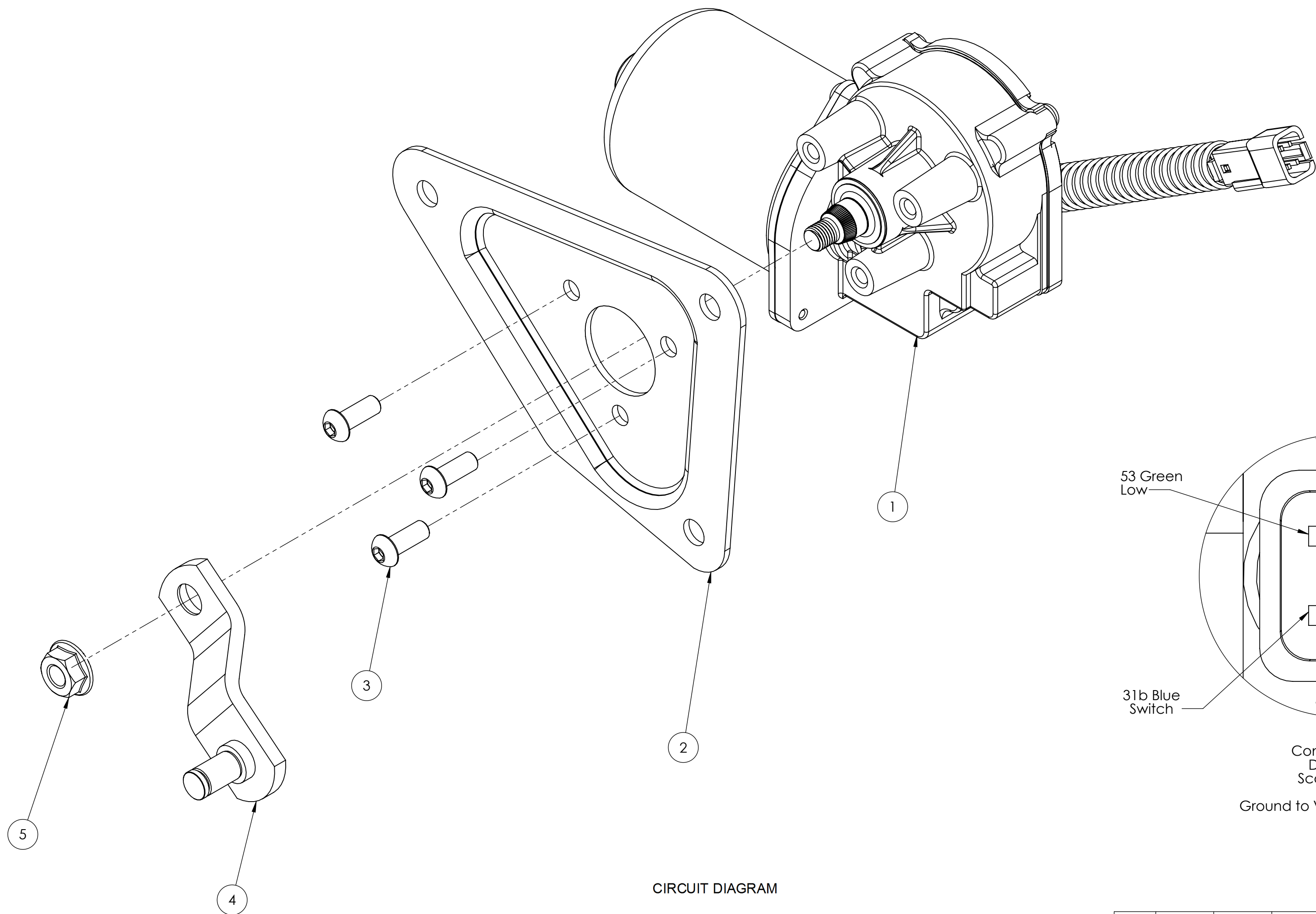
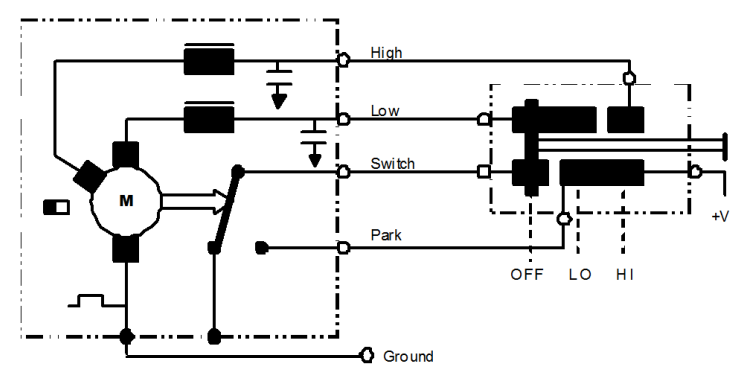


REV	DATE	DESCRIPTION
A	7-2-12	Initial Release



Connector  
Detail  
Scale 4:1  
Ground to Vehicle Chassis

CIRCUIT DIAGRAM



POS.	QTY	PART NO.	DESCRIPTION
5	1	400200	M8x1 Flanged Hex Nut
4	1	81501	Crank Ass'y R=49.8mm
3	3	106800	M6x1 Buttonhead Screws
2	2	102301	Crank Ass'y R=49.8mm
1	1	1999-3110015	32Nm Dynamic Park Motor

UNLESS OTHERWISE SPECIFIED:				
DIMENSIONS ARE IN MM		NAME	DATE	
3rd ANGLE PROJECTION		DRAWN JH	7-2-12	
		CHECKED MP	7-3-12	
		ENG APPR. MP	7-3-12	
COMMENTS:				TITLE:
				All Makes Motor
SIZE		DWG. NO.	REV	
C		AX9301	A	
SCALE: 1:1		WEIGHT:	SHEET 1 OF 1	

**PROPRIETARY AND CONFIDENTIAL**  
THE INFORMATION CONTAINED IN THIS DRAWING IS THE SOLE PROPERTY OF WEXCO INDUSTRIES. ANY REPRODUCTION IN PART OR AS A WHOLE WITHOUT THE WRITTEN PERMISSION OF WEXCO INDUSTRIES IS PROHIBITED.

INTERPRET GEOMETRIC TOLERANCING PER: ISO 2768-1 M MATERIAL  
FINISH  
APPLICATION