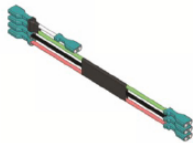


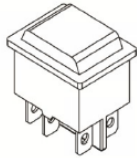
400258 Installation Instructions for 4R (CE) Series Motors

Step 1:

Insure receipt of all parts. Note that Red, Green and Black wires are not required for this installation. White jumper wire is required



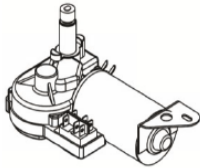
WIRE HARNESS



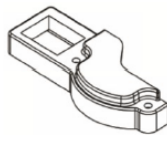
ROCKER SWITCH



2X 4mm SCREWS



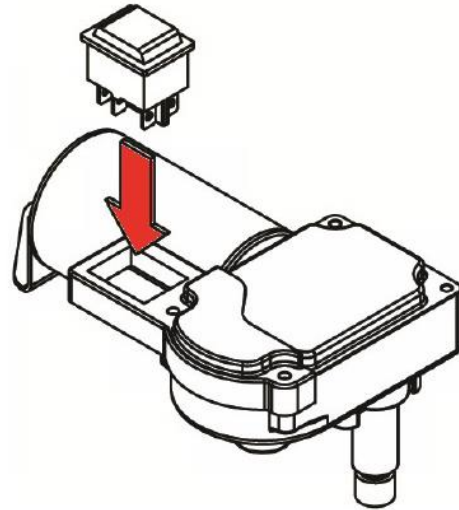
Y-MOTOR



MOTOR BRACKET

Step 3:

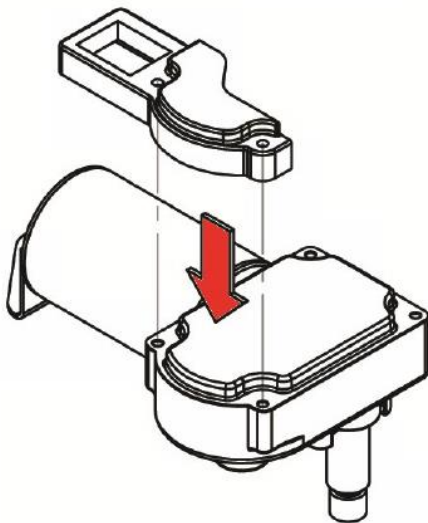
Install switch



SWITCH SNAPS INTO PLACE

Step 2:

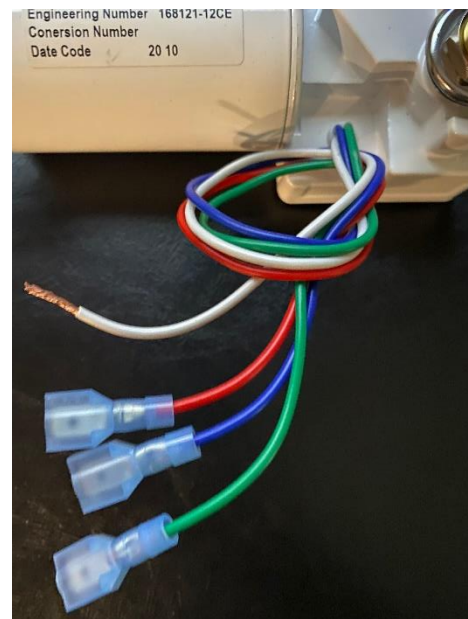
Install switch bracket



USE 4mm SCREWS TO SECURE BRACKET

Step 4:

Install female spade connectors on red, green and blue wires coming from motor (**Spade connectors are not supplied with kit**)



400258 Installation Instructions for 4R (CE) Series Motors

Step 5:

Wire motor terminals as shown

